

# HA 2135

## MATERIAL TECHNICAL DATA SHEET

Product Code: 312135

Revision # 001  
Dated: 07/29/06

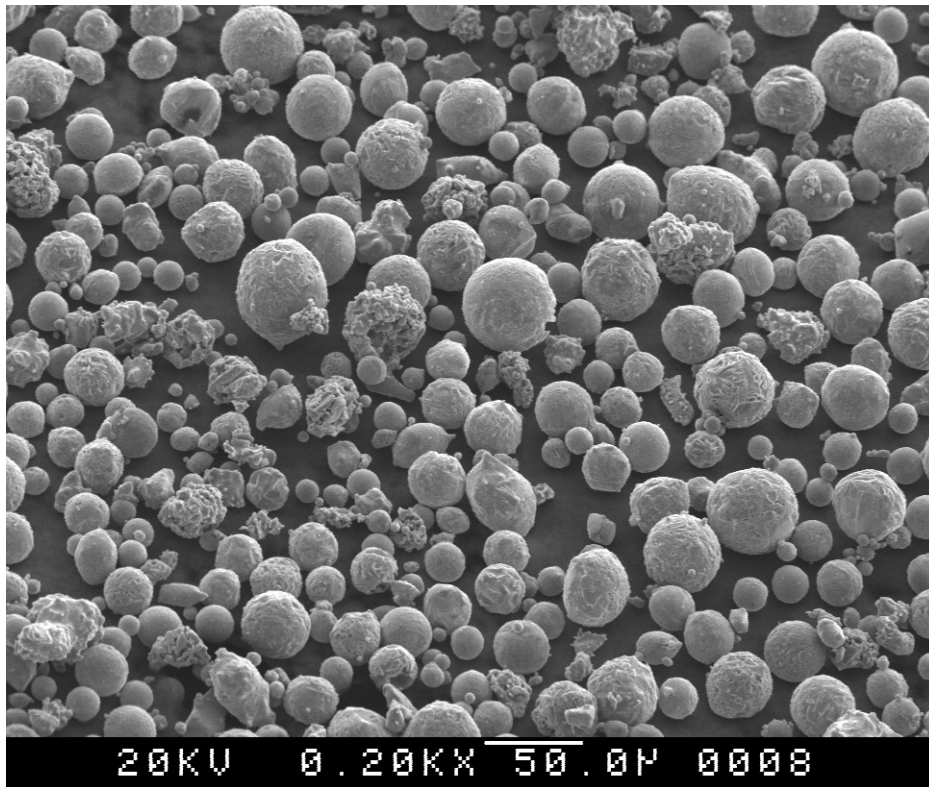


Fig. 1 200x

### 1.0 CHEMICAL PROPERTIES

1.0 **Chemical Properties:** Typical for 75/25 Cr<sub>3</sub>C<sub>2</sub> - NiCr

<u>Element</u>	<u>Min.</u>	<u>wt. %</u>	<u>Max.</u>
Chromium		<i>Balance</i>	
Carbon (total)	9.0		10.1
Nickel	17.0		23.0

# HA 2135

## MATERIAL TECHNICAL DATA SHEET

Product Code: 312135

Revision # 001  
Dated: 07/29/06

### PARTICLE SIZE AND POWDER MORPHOLOGY

2.0

2.1 MicroTrac Readings/Results:

2.1.1 Particle Size Specification: Uniform particle size meeting the following particle size distribution and microtrac results, Table I.

2.2 Powder Morphology

2.2.1 Powder has a Dense Spherical Shape, Fig. 1.

2.2.2 Figure 1: Required Powder Morphology using SEM x200.

**Table I**

<u>Size</u>	<u>Percentage (Wt.%)</u>
+270	4 max.
-325	59 min.
-16	10 max.
-7.8	2 max.

### PHYSICAL PROPERTIES

3.0

	Min.	Max.
Apparent Density, g/cc ASTM B212-89	2.4	3.8
Hall Flow, sec./50g ASTM B213-90	15	27